



# PRESTOP®

## Naturally fight against above ground-diseases (*Botrytis* and *Didymella*) and root or base rot diseases (*Pythium*, *Phytophthora*, *Rhizoctonia* and *Fusarium*)

Prestop® contains mycelia and spores of *Gliocladium catenulatum* strain J1446, a naturally occurring soil fungus, selected through Lallemand Research for its capacity to control a range of very important crop diseases.



*Gliocladium catenulatum* strain J1446

### ■ BENEFITS

Prestop® can give effective control of a wide variety of plant pathogens:

- ✓ **Grey mould and stem cankers** caused by *Botrytis cinerea* on leafy crops, tomatoes, peppers, cucumbers, aromatic plants, ornamentals, strawberries and other soft fruit.
- ✓ **Gummy stem blight** caused by *Didymella* sp. on cucumbers.
- ✓ **Damping-off and root or base rot diseases** caused by *Pythium*, *Phytophthora*, *Rhizoctonia* and *Fusarium* on vegetables, salads, aromatic plants and ornamentals.

### MODE OF ACTION

The active fungus *Gliocladium catenulatum* strain J1446 operates through several useful modes of action:



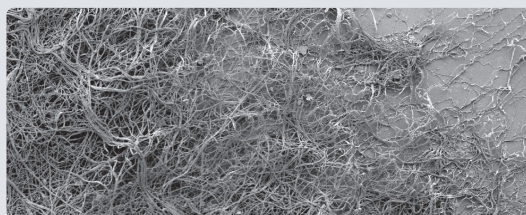
*Gliocladium catenulatum* strain J1446 grown on SDA petri dish.

- 1 Hyperparasitism:** production of enzymes which cause the breakdown of cell walls of plant pathogens.



*Gliocladium catenulatum* parasitising *Rhizoctonia solani*

- 2 Competition:** quick colonisation of root and aerial parts of the plants depriving pathogenic fungi of living space and nourishment.



*Gliocladium catenulatum* quick colonisation



# PRESTOP®



foliar spraying



application to roots

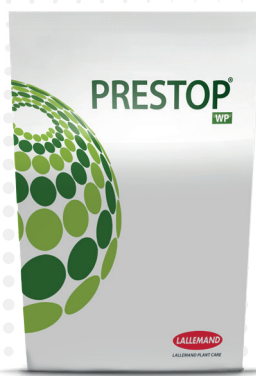
## ■ SPECIFICATIONS

- **Composition:** 2x10<sup>8</sup> CFU/g (320 g/kg of active ingredient) of spores and mycelium of *Gliocladium catenulatum* strain J1446.  
(CFU: Colony Forming Unit. Unit of measure for living microorganisms able to multiply)
- **Formulation:** wettable powder.
- **Storage:** can be stored unopened for 12 months in a cool and dry place below +4°C. It is recommended that all of the contents of the package are used immediately once opened.
- **Organic Agriculture:** usable in organic production subject to certification body approval.
- **Harvest interval:** none.
- **Harmful residues:** none.

## ■ COMPATIBILITY

Prestop® is compatible with many chemical pesticides and can be used in Integrated Pest Management (IPM) programmes.

Ask your distributor before mixing with plant protection products.



1 kg bag

Manufactured for :

**LALLEMAND PLANT CARE**

DANSTAR FERMENT A.G.  
Poststrasse 30, Zug CH-6300  
Switzerland

## ■ APPLICATIONS

The most efficient way to use Prestop® is preventatively. The active microorganism survives in the rhizosphere and on the aerial parts of plants for several weeks, protecting them against pathogens.

### • Dose rate & frequency:

	Maximum individual dose	Maximum total dose	Maximum number of treatments	Latest time of application
Strawberry (Protected & Outdoor)	6 kg/ha	—	3 per crop See <u>Other Specific Restriction 1</u>	Before the end of flowering
All Protected Edible Crops	500 g/m <sup>2</sup> compost or soil (incorporated into growing medium)	—	—	—
All Protected Non Edible Crops	500 g/m <sup>2</sup> compost or soil (incorporated into growing medium)	—	1 per batch of Growing Medium	—
All above See <u>Other Specific Restriction 2</u>	500 g/100 L water (applied as a spray/drench)	—	—	—

Other Specific Restrictions:

- (1) A minimum interval of 7 days must be observed between applications.
- (2) The maximum concentration must not exceed 500 g product per 100 litres water when applied as a spray or drench.
- (3) A minimum interval of 3 weeks must be observed between applications to crops other than strawberry.

Information provided above is compiled from details within the AUTHORISATION FOR A PLANT PROTECTION PRODUCT (PPP), PPP REGULATION (EC) N°1107/2009, Authorisation N°2241 of 2015, MAPP N°17223 (Registration holder: Verdera Oy).

There is a wide ranging Extensions of Authorisation for Minor Use (EAMU) in the UK (Number: 2773/15 under MAPP Number: 17223) for Prestop®.

It is essential that the finer details of the EAMU are studied with great care in order to guide exactly how to use the product correctly.

### • Preparation:

<b>1</b>		<b>2</b>	
	Fill half of the delivery system tank with clean water. Start the agitation mechanism and continue running it until and during the spraying operation.		Slowly pour the contents of the Prestop® bag(s) into the delivery system tank. Refer to the product label for the correct quantity required.
<b>3</b>		<b>4</b>	
	Top up the delivery system tank with clean water.		Keep mixing during application to maintain the product in suspension.



LALLEMAND PLANT CARE